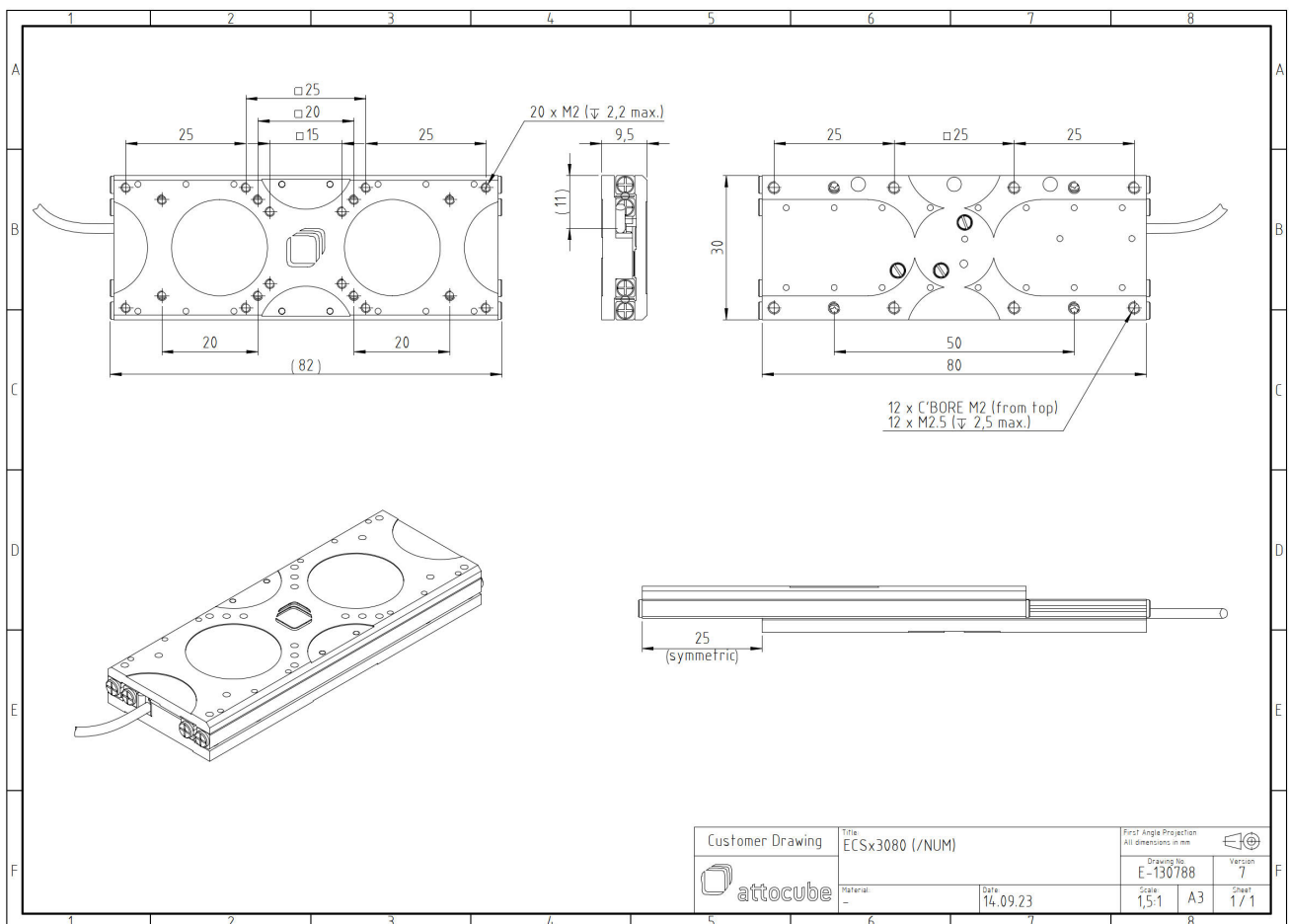


ECSx3080/AI/HL/RT

1008839

Technical Specifications

Size and Dimensions	
footprint; height	30 mm x 80 mm; 9.5 mm
maximum installation space	30 mm x 131.6 mm; 9.5 mm
weight (aluminium version)	78 g
height	9.5 mm
Materials	
positioner body	aluminum
actuator	PZT ceramics
connecting wires	copper, jacket: RT: PTFE, HV/UHV: fiberglass
Coarse Positioning Mode	
travel range (step mode)	50 mm
maximum drive velocity @ 300 K	4.5 mm/s
input voltage range	0 - 45 V
Fine Positioning Mode	
fine linear positioning range @ 300 K	1.6 μ m
fine positioning resolution	sub-nm
input DC voltage range	0 - 45 V
Load (@ ambient conditions)	
maximum load	2 kg
maximum dynamic force along the axis	5 N
General Specifications	
environment	/RT



Customer Drawing	Title: ECSx3080 (/NUM)	First Angle Projection All dimensions in mm
	Material: -	Drawing No. E-130788
	Date: 14.09.23	Version: 7
		Scale: 1,5:1
		A3
		Sheet: 1 / 1