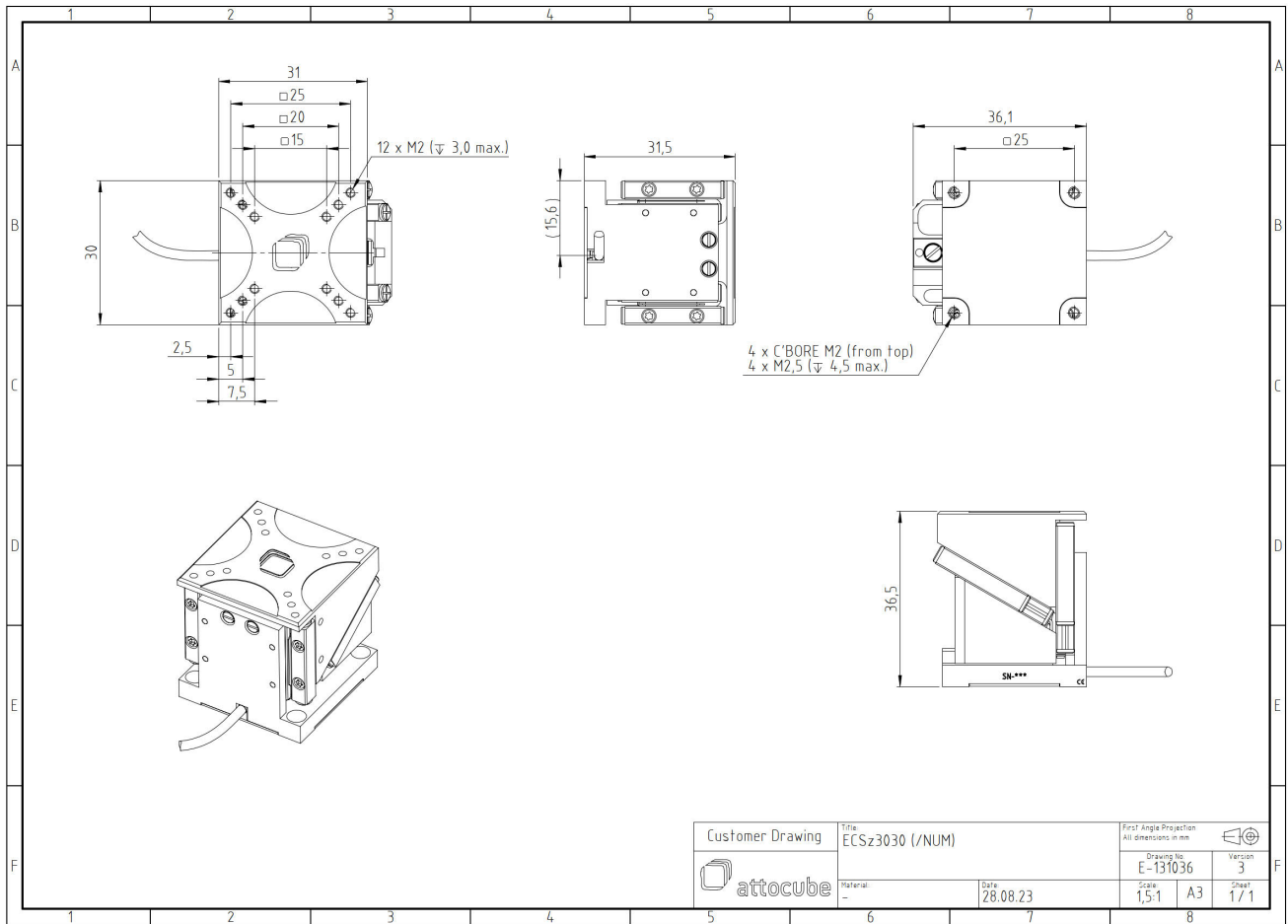


ECSz3030/AI/NUM/RT

1012903

Technical Specifications

Size and Dimensions	
footprint; height	30 mm x 31 mm; 31.5 mm
maximum installation space	30 mm x 36.1 mm; 36.5 mm
weight (aluminium version)	90 g
height	31.5 mm
Materials	
positioner body	aluminum
actuator	PZT ceramics
connecting wires	copper, jacket: RT: Teflon/PTFE
Coarse Positioning Mode	
travel range (step mode)	5 mm
maximum drive velocity @ 300 K	2 mm/s
input voltage range	0 - 45 V
Fine Positioning Mode	
fine linear positioning range @ 300 K	0.8 μ m
fine positioning resolution	sub-nm
input DC voltage range	0 - 45 V
Position Encoder	
readout mechanism	optoelectronic sensor
encoded travel range	entire travel
sensor resolution	1 nm
sensor power (when measuring)	300 mW
repeatability	50 nm (bidirectional)
Load (@ ambient conditions)	
maximum load	800 g
maximum dynamic force along the axis	8 N
General Specifications	
environment	/RT



Customer Drawing	Title	ECSz3030 (/NUM)		First Angle Projection All dimensions in mm	
	Material	Date	28.08.23	Drawing No.	E-131036
attocube	Scale	1,5:1	A3	Version	3
	Sheet	1 / 1			