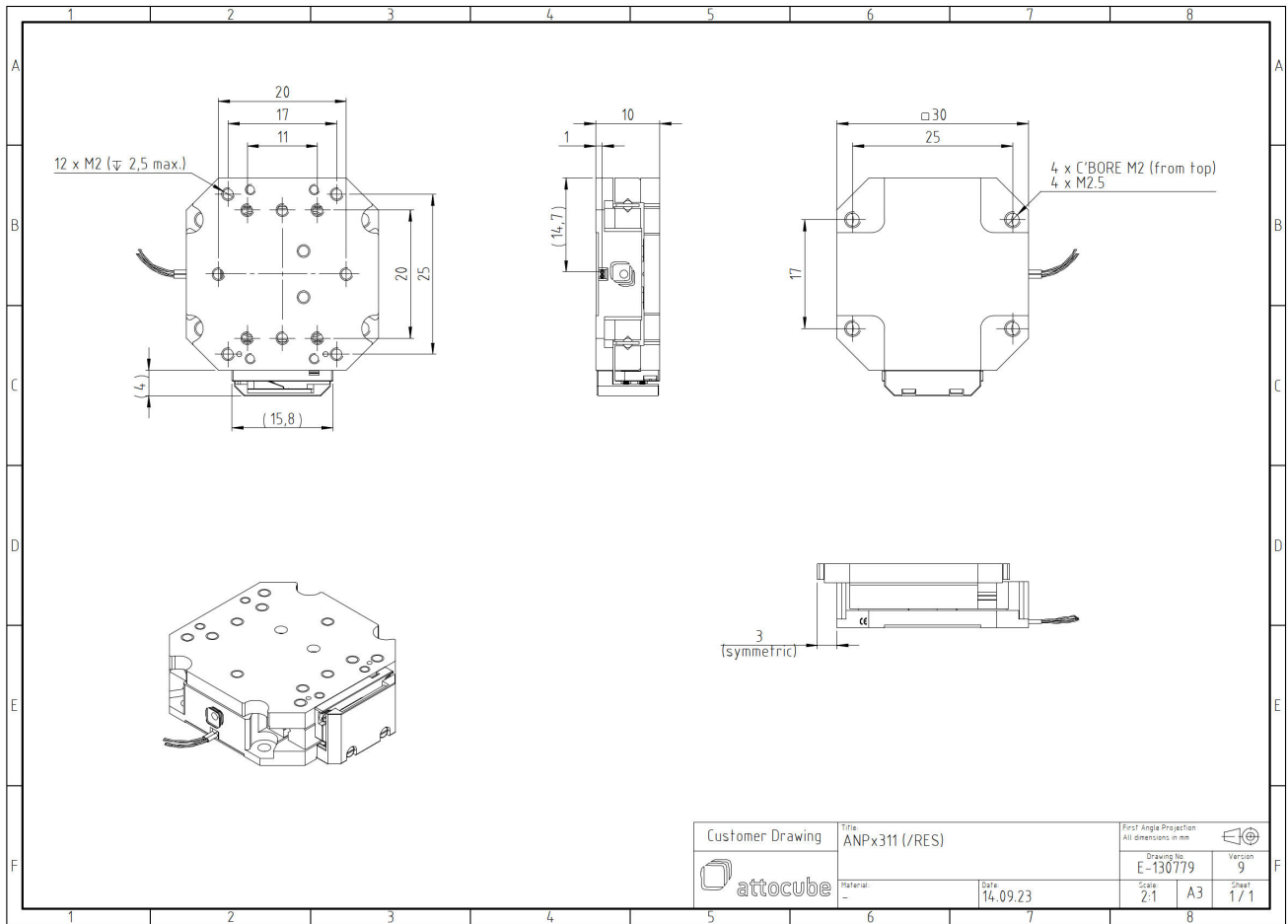


ANPx311/RES/LT - linear x-nanopositioner

1008593

Technical Specifications

| | |
|---------------------------------------|--------------------------------|
| Size and Dimensions | |
| footprint; height | 34 mm x 30 mm; 10 mm |
| maximum installation space | 34 mm x 36 mm; 10 mm |
| weight | 32 g |
| Materials | |
| positioner body | titanium |
| actuator | PZT ceramics |
| connecting wires | insulated twisted pair, copper |
| Coarse Positioning Mode | |
| travel range (step mode) | 5.8 mm |
| maximum drive velocity @ 300 K | ~ 3 mm/s |
| Fine Positioning Mode | |
| fine linear positioning range @ 300 K | 5 μ m |
| fine linear positioning range @ 4 K | 0.8 μ m |
| fine positioning resolution | sub-nm |
| input DC voltage range @ 4 K | 0 - 150 V |
| Position Encoder | |
| readout mechanism | resistive sensor |
| sensor resolution | ~ 200 nm |
| repeatability | 1..2 μ m (unidirectional) |
| Load (@ ambient conditions) | |
| maximum load | 2 kg |
| maximum dynamic force along the axis | 2 N |
| General Specifications | |
| environment | /LT |
| min. first natural frequency | 2600 Hz |



| | | | | |
|------------------|-----------------------|----|--|--|
| Customer Drawing | Title: ANPx311 (/RES) | | First Angle Projection All dimensions in mm | |
| | Material: - | | Date: 14.09.23 | |
| attocube | Drawing No: E-130779 | | Version: 9 | |
| | Scale: 2:1 | A3 | Sheet: 1 / 1 | |