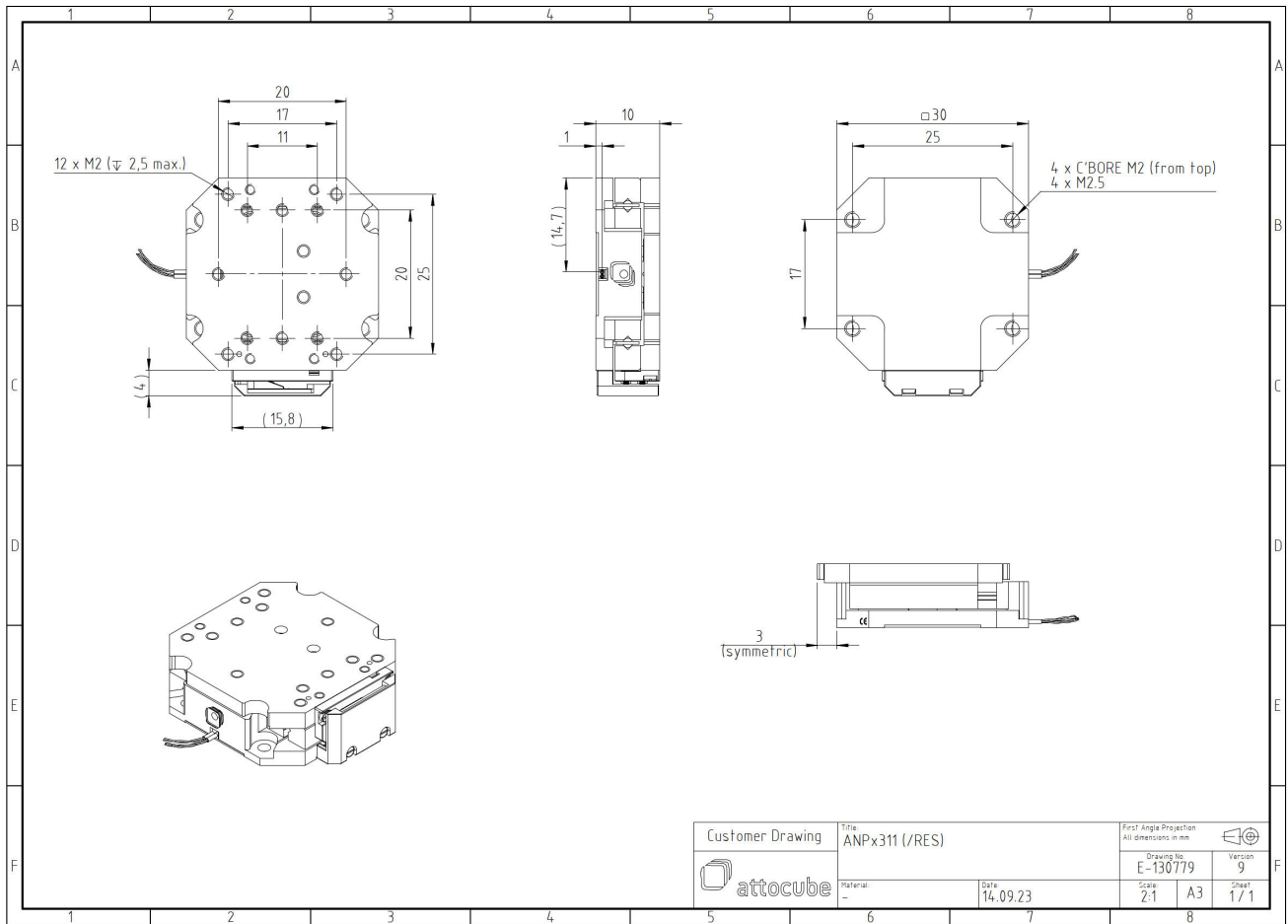


# ANPx311/HL/RES/LT/HV - linear x-nanopositioner

1008949

## Technical Specifications

<b>Size and Dimensions</b>	
footprint; height	34 mm x 30 mm; 10 mm
maximum installation space	34 mm x 36 mm; 10 mm
weight	32 g
height	10 mm
<b>Materials</b>	
positioner body	titanium
actuator	PZT ceramics
connecting wires	insulated twisted pair, copper
<b>Coarse Positioning Mode</b>	
travel range (step mode)	5.8 mm
maximum drive velocity @ 300 K	~ 3 mm/s
input voltage range	0 - 60 V
<b>Fine Positioning Mode</b>	
fine linear positioning range @ 300 K	5 µm
fine linear positioning range @ 4 K	0.8 µm
fine positioning resolution	sub-nm
input DC voltage range @ 300 K	0 - 100 V
input DC voltage range @ 4 K	0 - 150 V
<b>Position Encoder</b>	
readout mechanism	resistive sensor
sensor resolution	~ 200 nm
repeatability	1..2 µm (unidirectional)
<b>Load (@ ambient conditions)</b>	
maximum load	2 kg
maximum dynamic force along the axis	2 N
<b>General Specifications</b>	
environment	/LT/HV
min. first natural frequency	2600 Hz



Customer Drawing	Title: ANPx311 (/RES)		First Angle Projection All dimensions in mm	
	Material: --		Drawing No: E-130779	Version: 9
Date: 14.09.23		Scale: 2:1	A3	Sheet: 1 / 1